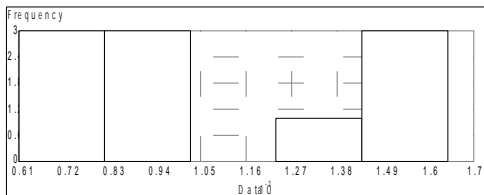
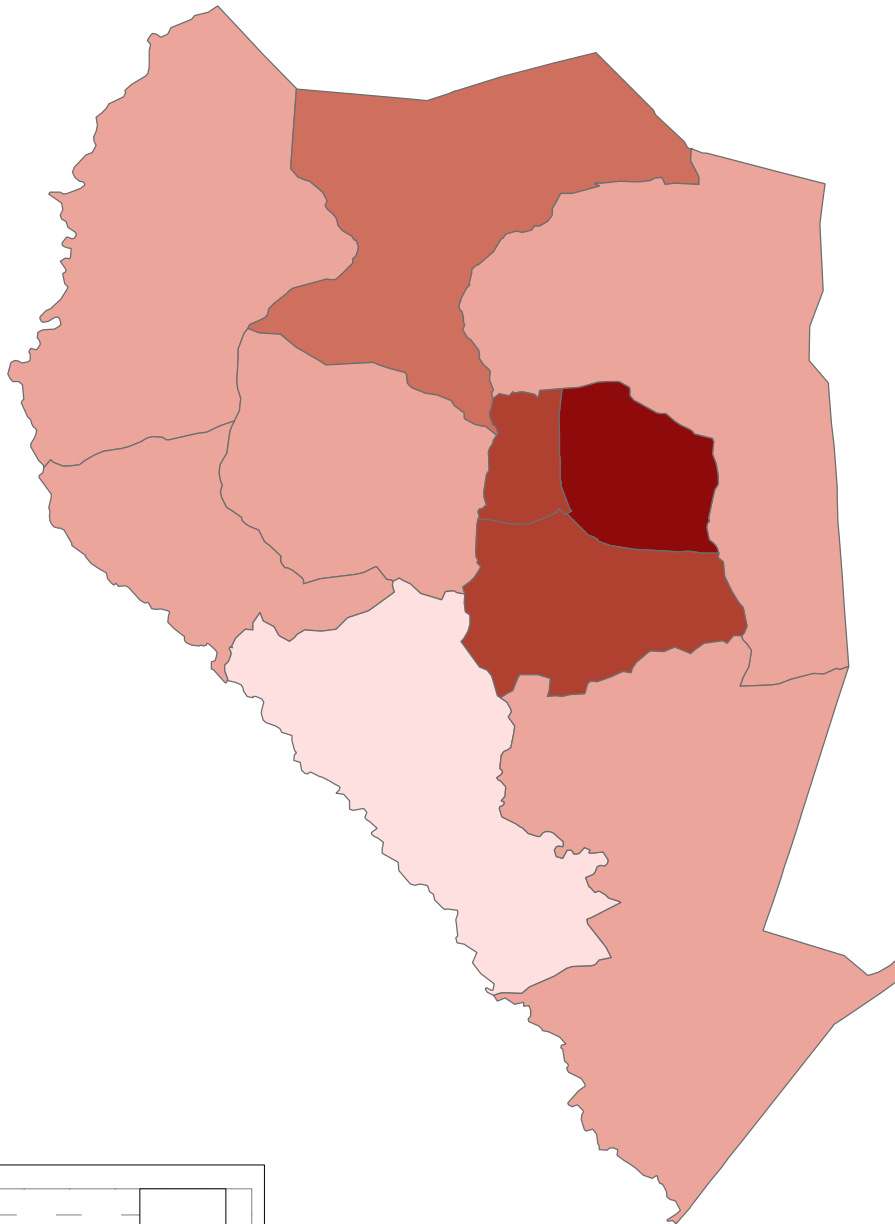


Sampson County, NC



0 2.5 5
Miles

SSRI/PRI - GIA Core
Sundar S. Shrestha
September 27, 2004
GIS Data Sources:
PASDA, U.S. Census
Bureau, and PennDOT.

5

**Population with
Bachelor's Degree
or Higher**

Percent

- < 6.20
- 6.21 - 10.00
- 10.01 - 14.00
- 14.01 - 16.00
- 16.01 +