

Census CD + Maps

Frances F. Burden

This document provides a brief overview of Census CD + Maps.

Overview:

Census CD + Maps is a single Windows CD-ROM produced by Geolytics, Inc (<http://www.geolytics.com/>). The Census CD + Maps makes available an impressive array of both a.) Geographic boundary data, and b.) Demographic data. In total, the CD contains the 1990 US Census data for 16 levels and the corresponding map boundaries, which encompass over 375,000 geographic areas in the US. The data once selected can easily be exported into a variety of data base file formats, as well as GIS formats (Arcview shape files and MapInfo files). The table below provides potential users with a list of the levels of geographic data made available.

Geographic Levels of Data:

The core set of data in CensusCD + Maps is for 16 levels of geography:

1. Nation	9. ZIP (zipcodes)
2. Region	10. MSA/CMSA
3. Division	11. PMSA
4. State	12. Urban Area
5. County	13. 104 th Congressional Boundaries
6. Tracts	14. American-Indian
7. Blockgroups	15. ANRC
8. Places	16. MCDs (Minor Civil Divisions)

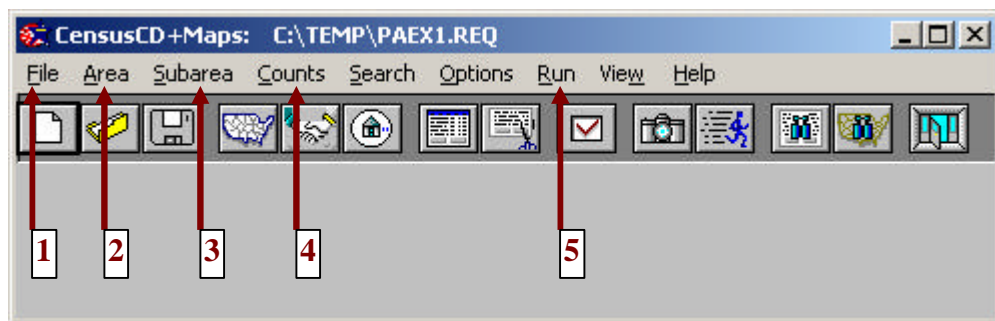
GIA Core Resources:

Current software is available in Oswald Tower on the eighth floor. The Census CD + Maps are located on the library shelves in a 3 ringed binder entitled, "Census".

Starting CensusCD + Maps:

1. Load the CD located in the "Census CD + Maps 1990" section into a CD-drive that is located on one of the 8th Floor computers located in 806 Oswald.
2. To start the Census CD + Maps session begin from the *Start* menu. Select *Programs* and then go to *CensusCD* and finally go to *Census CD + Maps*. This will start the Program.
3. Once there, you will be promoted to see an easy introduction of how to use the program. You may do this if you wish, but then follow these directions. A menu bar appears across the top of the session window. The menu bar identifies the main command areas within the program. Left to right they are: *File, Area, SubArea, Counts, Search, Options, Run, View and Help*.

Extracting Data from CensusCD + Maps



1. **FILE** – Decide where you would like to save your data and navigate to that directory or else type the location in, and provide a filename. Once you have done this, then click okay and move to step 2.
2. **AREA** – Under AREA, there are three options:
 - A. **GEOGRAPHIC AREA**: You will most likely be using Geographic area, which allows you to select from any of the 16 geographic areas that are listed in the above table.
 - B. **NEIGHBORHOOD**: You will be prompted for a zipcode and/or a street address, so that Census CD + Map can find the corresponding census blockgroup.
 - C. **RADIUS**: This command allows the user to create a circular area for a specified distance, providing that the user has i.) latitude & longitude coordinates, ii.) a zipcode centroid, iii.) a place centroid, or iv.) an address geocode.
3. **SUBAREA** – Under SUBAREA, you are able to choose your desired unit of analysis. There are two options available for your selection:
 - A. **SUMMARIZE**: This provides you with the aggregated data for an area, which is a useful function for quickly getting the total count of Variable X for a geographic area. (Example: if you were interested in the total number of homes with indoor plumbing in the South, you would use this command.)
 - B. **SMALLER AREA**: This allows you to break down demographic data into any smaller geographic unit for an area. (Example: if you were interested in neighborhood poverty levels for the state of New York, you would use this command to get a table of the poverty rate for the different Block Groups in New York.) This is the command that you must use in order to generate a Dbase file, an ASCII file, or a thematic map (used to generate extract files into Arcview, MapInfo, etc...)
4. **COUNTS** – Under COUNTS, you are able to specify which demographic or socioeconomic data, you would like to view as a report or map. There are two options available in this step:
 - A. **STANDARD**: This useful feature groups similar demographic variables have been grouped in 37 categories, including: social characteristics, labor force, income/poverty, housing characteristics, all 1990 census counts, etc....
 - B. **TAILORED**: This command provides a selection of individual demographic data items or “Counts” for your chosen area. A selection screen appears after the tailored menu choice is made. The upper selection window lists the tables available for each selected groups, while the lower left window displays the individual variables available to the user. In the lower right screen, you will see which variables have been selected and which will be included in a report or map.
5. **RUN** – This is the final step. This command will allow you to create a report as a.) A List (i.e. a formatted text), b.) A .DBF file, c.) An ASCII (commas or tab delimited, with or without headers), d.) A snapshot report, which is a predetermined set of demographic variables (this option requires only that you specify the AREA), or e.) A map.

***Note:** Map, ASCII, List and .DBF options are only available if the SUBAREA selection is made.*

Once you have selected the type of desired file, then hit RUN. A Run Status window will be displayed, which provides the amount of time the data extract will take and where the data will be stored once the action has been completed.

Current Examples of Penn State Usage:

Census CD + Maps covers 1990, and the GIA Core has just received the Census CD + Maps 2000 version. Because this data CD is easy to use, the GIA Core often pulls data from Census CD + Maps for many of their different projects.

Examples include:

1. PA and NC Rural Poverty Study
2. The Atlanta Recidivism Project