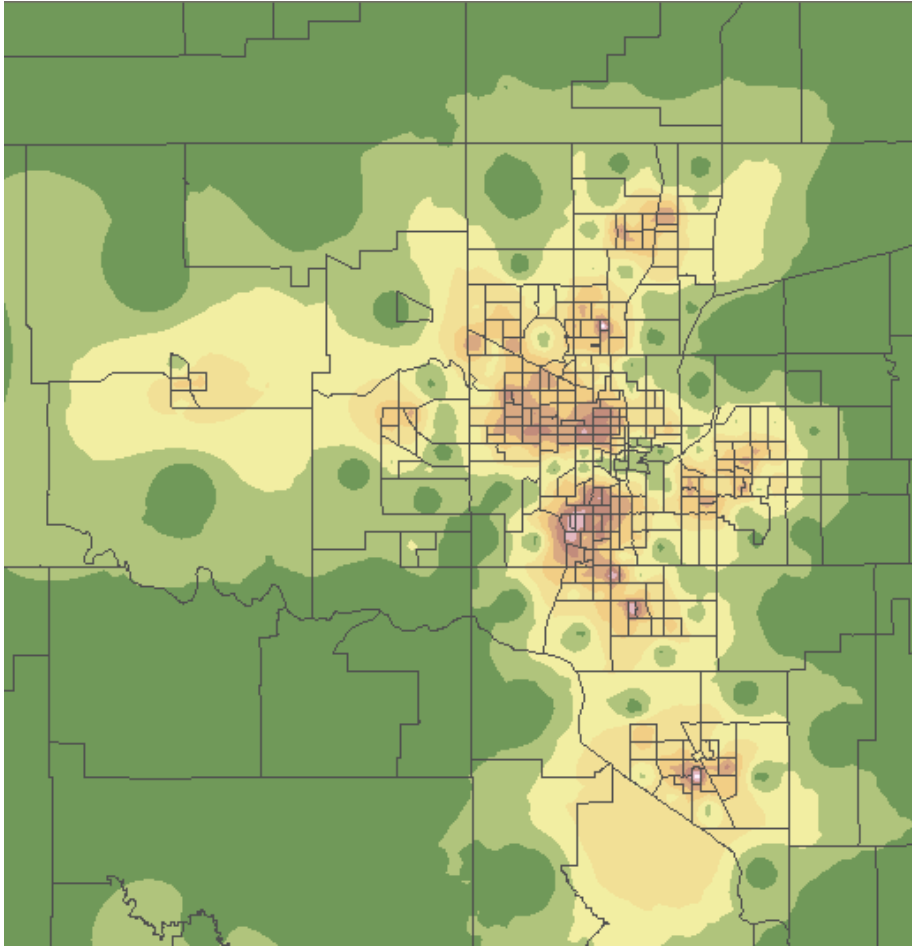


Isopleth Maps

Prepared by James E. Detwiler

Definition: Most glossaries list isopleth as a synonym for isoline and you'll see these terms used interchangeably in the GIS literature. However, ESRI's online GIS Dictionary draws a distinction by saying that an isopleth is "an isoline drawn according to known values that can only be recorded for areas, not points." Regardless of their true meanings, this ESRI definition brings up an important notion: that lines of equal value can be drawn not only around a set of points, but also around a set of area-based measurements. In creating an area-based isopleth map, the aggregated counts are assigned to each area's centroid (geometric center). The isopleths are then drawn around those centroids.



The figure above is an example of using GIS to draw isopleths of population density around census tract centroids.

See also *isoline maps*.

References/Sources:

ESRI, GIS Dictionary. <http://support.esri.com/index.cfm?fa=knowledgebase.gisDictionary.gateway>, Accessed 27 November 2005.

US Department of Health and Human Services, Neighborhoods and Health: Building Evidence for Local Policy, <http://aspe.hhs.gov/hsp/neighborhoods-health03/Part1.htm#section5>, Accessed 27 November 2005.